



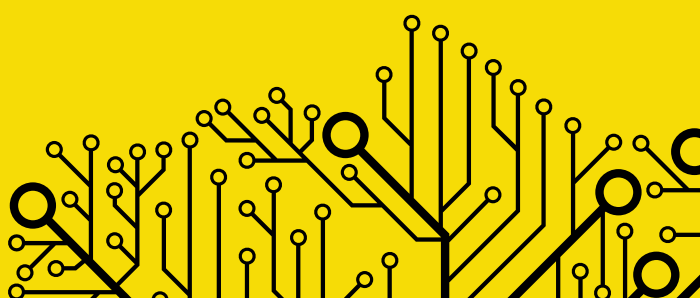
An Introduction to  
**BELGIUM CAMPUS**  
**iTVERSITY**

A firm foundation for sustainable IT growth



# TABLE OF CONTENTS

<b>ARE YOU READY TO CHANGE THE WORLD?</b>	<b>1</b>
<b>THE BC X-FACTOR</b>	<b>2</b>
A student-centred approach	3
Our Participative Development Model	4
<b>ACCREDITATION</b>	<b>5</b>
Local accreditation	5
International recognition	6
<b>A PLATFORM TO INNOVATE</b>	<b>7</b>
Mobile health	8
Education	9
Smart cities	9
Agriculture	10
Aviation	10
<b>CAREER CHOICES</b>	<b>12</b>
Software engineers	13
Software developers	13
Business intelligence experts	13
Infrastructure experts	13
<b>CURRICULUM</b>	<b>14</b>
<b>THE COURSES WE OFFER</b>	<b>16</b>
Diploma in Information Technology	16
Specialisation in Software Development	17
Specialisation in Infrastructure	17
Bachelor of Information Technology	18
Specialisation in Software Development	19
Part-time studies	19
Bachelor of Computing	20
Specialisation in Data Science	21
Specialisation in Software Engineering	21
National Certificate programmes	22
Specialisation in Systems Development	23
Specialisation in Database Development	23
<b>FEES</b>	<b>24</b>
<b>ACADEMIC CALENDAR</b>	<b>25</b>
<b>ADMISSION REQUIREMENTS</b>	<b>26</b>
<b>APPLICATION PROCESS</b>	<b>27</b>
<b>FACILITIES</b>	<b>28</b>
<b>PARTNERING FOR SUCCESS</b>	<b>32</b>
<b>BELGIUM CAMPUS RECRUITMENT EVENTS</b>	<b>33</b>
<b>CONTACT DETAILS</b>	<b>33</b>



1

# ARE YOU READY TO CHANGE THE WORLD?

**ARE YOU READY TO EMBARK ON A CAREER IN IT? TO GAIN AN OUTSTANDING QUALIFICATION IN THE MOST DYNAMIC, ADAPTIVE AND PIVOTAL INDUSTRY ON EARTH? THE TIME IS NOW TO CO-CREATE A SHARED DESTINY FOR THE FUTURE.**

At Belgium Campus, we take a visionary and uncompromising approach to the quality of the education we offer our students. We don't simply comply with world-class principles and standards – we exceed them daily; in the way we operate, structure our curricula and engage with our students. This is why we boast a 100 percent employment rate and provide no fewer than 10 percent of the IT graduates in South Africa. It's the way we're wired.

**Belgium Campus is more than just a higher education institution. It is a gateway to the future as well as a collaborative hub where international and local game changers in academia, business and communities converge to bring innovation, upliftment and value to all our partners.**

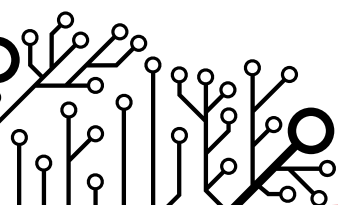
When you join our team, you will become part of a revolutionary participative education model, which addresses the needs and talents of each student and builds enduring partnerships with business, local government and communities. A model that continuously refines the course content to merge theoretical and practical elements, ensuring you are employment-ready on the day you graduate.

As you embark on a journey that will no doubt transform you into a seasoned innovator, we offer you endless possibilities. At Belgium Campus, we will help you unlock your potential as a software engineer, software developer, systems architect, business intelligence expert, data analyst, systems and infrastructure expert, data miner or web developer. Add to this, we have recently introduced an innovative concept – the opportunity to specialise in artificial intelligence, data sciences and cyber-security; all developed in collaboration with leading industry experts.

“

**AT BELGIUM CAMPUS, WE LEARNT HOW TO THINK OUT-SIDE OF THE BOX. FOR WEB PROGRAMMING, HOWEVER, EVERYTHING HAD TO BE INSIDE THE BOX.**  
— LOUIS MARX, VALEDICTORIAN OF CLASS 2018

”



“

**BEING ABLE TO CONTRIBUTE TO THE NEEDS OF THE COUNTRY IS A PRIVILEGE FOR BELGIUM CAMPUS. AS AN ENGAGED iTVERSIITY, WE WANT TO EXPOSE OUR STUDENTS TO MORE EXPERIENCES, NOT JUST IN EDUCATION, BUT IN THE FIELDS OF RESEARCH AND INNOVATION, THROUGH COLLABORATIONS WITH OTHER UNIVERSITIES, AND WITH THE ICT INDUSTRY ITSELF. — ENRICO JACOBS, CEO, BELGIUM CAMPUS.**

”

We offer cutting-edge facilities, as well as the industry's leading lecturers and professors in the Information Technology (IT) realm- all here to guide our students on their journey. Our curriculum is developed to suit the students and their needs, building on their strengths and addressing their limitations. To this end, and in keeping with the spirit of Ubuntu that informs every aspect of our being, we are one of the few institutions that accommodate and give personal attention to students with special needs and disabilities.

Our nationally accredited and internationally recognised qualifications in IT will position you as a key player in the Fourth Industrial Revolution, giving you a solid footing to forge ahead and co-create the future. It's the way we're wired.



## WHAT SETS **US** APART, WILL SET **YOU** APART

**While the rest of the world cultivates conformity, we celebrate diversity. We know that it is those who are wired a little differently who will ultimately change the world.**

IT is an essential part of our everyday lives, from email, web browsing to smartphones and their applications. IT is everywhere. Today's world requires innovative solutions to cater for industry and businesses. At Belgium Campus we specialise in preparing our students for exactly this.

By continuously adapting our programmes to suit the 'real world', we are able to cultivate your expertise and ensure you're an asset to the industry. No matter which qualification you choose to embark on, Belgium Campus is committed to maintaining the highest local and international standards.





At Belgium Campus, we see ourselves as custodians of your emerging future self, and we have pioneered new processes to ensure that the future is yours to unfold.

## A STUDENT-CENTRED APPROACH

OUR WORLD REVOLVES AROUND **YOU**

At Belgium Campus, we have abandoned teaching methods that do not deliver results. We have reimagined a student-centric approach where we reverse engineer our operations to address your specific needs, talents and capabilities; honouring your dreams and aspirations along the way.

Our praxis is holistic – we see our students as individuals with whom we engage daily to ensure optimal performance and well-being. We want to enrich our students at both a professional and personal level, through support, counselling and mentorship.

Ultimately, the only measure of success for us is when you emerge from your studies, empowered and enabled to achieve those dreams and aspirations.

“

**I COME FROM A BACKGROUND WHERE IT IS A FAR-FETCHED THOUGHT, AND THE REASON I'M HERE IS BECAUSE SOMEBODY MADE ME UNDERSTAND THE IDEA OF A WORLD I DIDN'T EVEN KNOW EXISTED.**  
— THANDEKA MBOKAZI, THIRD YEAR BELGIUM CAMPUS STUDENT.

”

### A UNIFORM THAT SHOWS OUR SOLIDARITY

Wearing a uniform at Belgium Campus is an expression of solidarity, so that all students, no matter their background, are treated with the same dignity and respect. Since we engage regularly with industry giants, governments the world over and large corporates from as early as the first year of study, we want to present our students as contemporary professionals who have found their place in society.

“

**AT BELGIUM CAMPUS, WE BREED FUTURE ENTREPRENEURS AND GREAT INNOVATORS THAT ARE NEEDED IN THE SOUTH AFRICAN AND GLOBAL ECONOMY.**  
— CHARMAINE TAVAGWISA, BELGIUM CAMPUS SENIOR LECTURER: ROBOTICS.

”



## ○ OUR PARTICIPATIVE DEVELOPMENT MODEL

### THE REASON WHY 100% OF OUR STUDENTS ARE EMPLOYED POST-GRADUATION

At Belgium Campus, we've created a ground-breaking, truly participative educational model, where the theoretical knowledge our students obtain is grounded and rooted in real-world experience. By partnering with international universities and local and global businesses, our aim is to transform that knowledge base into practical skills and know-how, so that our students graduate from our Campus and go directly into the world of work.

**Our students collaborate with peers from international universities, through multi-disciplinary innovation and research projects, meeting industry demands. We drive innovation to uplift and empower consumers (and their local communities) through technology. We offer so much more than an excellent education – we offer the skill-set for success.**

Our pioneering Participative Development Model for Education (PDM) sets our students apart through an active engagement between all stakeholders, where everyone contributes to the educational experience to ensure maximum value for all.

### CONTINUOUS CONSULTATION WITH EMPLOYABILITY AT THE FOREFRONT

The PDM partnership is powered by:

#### STUDENTS



We see you as co-contributors of knowledge in the study environment. We actively encourage you to enhance your intellectual ability and to build your academic and personal profile through enabling internships, partnerships and practical projects.

#### ACADEMIA



Faculty staff at Belgium Campus constantly refine and adapt our curricula in collaboration with faculties from national and international academic institutions. We do this with the aim of meeting the demands of industry, government and society, by producing sought-after candidates who are employment-ready and have an entrepreneurial mindset.

#### INDUSTRY



Industry partners provide us with up-to-date information on the changing needs, skills and profiles required in the workplace. They ensure we remain ahead of technological advances, societal shifts and evolving industry standards.



We had international lecturers, which really exposed us to what was happening in IT, in the corporate world. We did projects and we were assessed. I would say that if you are looking for a hands-on university, Belgium Campus is the one to go for!

— **THANDIWE NTULI, GRINDROD BANK: RETAIL DIVISION, AND BELGIUM CAMPUS ALUMNI.**

With an internship at Siemens in Belgium, Belgium Campus not only allowed me to further my studies, but also to broaden my horizons, and I think that's fantastic.

— **LIONEL TCHOMBA, BELGIUM CAMPUS 2017 GRADUATE AND VALEDICTORIAN.**



## PERFECTLY POISED TO UNLOCK LOCAL IT EMPLOYMENT OPPORTUNITIES

### LOCAL ACCREDITATION

Belgium Campus is a private higher education institution registered with the Department of Higher Education and Training (DHET), accredited by the Council on Higher Education (CHE) and listed with the South African Qualifications Authority (SAQA) on the National Qualifications Framework.

The Belgium Campus 1 iTversity NPC (Not for Profit Company), PBO (Public Benefit Organisation) Reference No: 930009313, is registered with the Department of Higher Education as a private higher education institution under the Higher Education Act, 1997. Registration certificate no. 2003/HE08/001 to offer the programmes listed thereon.

#### Legal Status

Belgium Campus 1 iTversity NPC is a legal entity incorporated in terms of section 13 of the Companies Act, 71 of 2008, with registration number 2001/017971/08.

#### Sites of Delivery

Belgium Campus 1 iTversity NPC is registered to offer accredited programmes at following sites of delivery:

- A. Pretoria: 138 Berg Avenue, Heatherdale, Akasia, Pretoria, 0001
- B. Kempton Park: 45A Long Street, Kempton Park, 1619
- C. Port Elizabeth: 6 Uitenhage Road, North End, Port Elizabeth, 6056

#### Registered programmes offered

Belgium Campus 1 iTversity NPC is registered to offer the following programmes, which are approved by the Registrar.

- Diploma in Information Technology (HEQSF Aligned, NQF Level 6, 360-Credits, Contact Mode)
- Bachelor of Information Technology (Software Development) (HEQSF Aligned, NQF Level 7, 360-Credits: Contact Mode)
- Bachelor of Computing (HEQSF Aligned, NQF Level 8, 480-Credits: Contact Mode)

#### MICT SETA

- National Certificate: Information Technology (System Development) (SAQA Aligned, NQF Level 5, 131-Credits)
- National Certificate: Information Technology (Database Development) (SAQA Aligned, NQF Level 6, 120-Credits)

\*please refer to our tuition form for courses offered at the registered sites of delivery





## ALIGNED TO THE HIGHEST STANDARDS ON THE GLOBE

**Belgium Campus** provides a world-class educational experience for all its students. The institution and its qualifications are audited every five years and benchmarked against the accreditation protocol of the Dutch and Flemish Accreditation Organisation.

An official audit was conducted in 2018 by KU Leuven (ranked 7th most innovative university in the world) and UAntwerpen, using the parameters of a bachelor degree, as set out in the accreditation framework of the Dutch Flemish Accreditation Organisation (NVAO), the Flemish Council for University Colleges (VLHORA) and the Flemish Interuniversity Council (VLIR), which is a leading accreditation protocol with immense standing in Europe. In 2007 and 2012, this audit was done by UCLL (University Colleges Leuven Limburg).

The executive summary of the audit states that the Bachelor Degree of Computing offered by Belgium Campus is comparable to and is even slightly more advanced than an academic bachelor programme of European standards. Discussing the programme in depth with the passionate and inspired lecturers, support staff, management and their partners made the commission confident about the level and quality of the educational offer. The members of the commission were impressed by the disciplined and enthusiastic nature of the students.

Moreover, Belgium Campus was nominated by The Academic Union, Oxford, for The European Quality Award in Education in 2017. We've forged education alliance partnerships with the best international networks and brands. We are:

- ▶ a partner of **IBM**, that offers courses and certification on Blockchain and Data Science
- ▶ a university alliance partner of **Microsoft**. All our students get free access to all Microsoft products and receive 1TB of storage on the cloud.
- ▶ partnered with other networks that vet the role of the university in society, such as **PASCAL** (Place And Social Capital And Learning), **UIIN** (The University Industry Innovation Network), and **GUNI** (Global University Network on Innovation).
- ▶ a member of **CISCO** training boutique offering training materials including topics such as Machine Learning and Cyber-security
- ▶ the only member in Africa on **Businet.org.uk**, a global business education network establishment to meet the needs of institutes, their staff and their students.

# A PLATFORM TO INNOVATE

LEARN WHILE YOU WORK ON PROJECTS THAT DIRECTLY IMPACT INDUSTRY AND COMMUNITIES

**Belgium Campus** encourages collaboration by creating “virtual classrooms” and mobility programmes where our students engage and interact with students abroad. We have partnered with KU Leuven, Penn State University, University Colleges Leuven-Limburg, the Universities of Melbourne and Sydney and PXL University of Applied Sciences and Arts. Exciting international innovation projects with these leading universities give our students the opportunity to engineer new solutions with their international counterparts. We are not only breaking technology boundaries, but global boundaries too.

We have created “Learning Factories” – creative, hands-on, physical workspaces, where you can develop prototypes and test them. You will have the space in which to innovate real applications for the real world, right from year one of your studies. You will have the opportunity to work with world-leaders in innovation such as RESNA, Boeing, Lockheed Martin, ArcelorMittal, Atlas Copco and Edict. These factories are, in collaboration with academic and industry experts, incubation hubs for the following real-life applications:

01 Mobile Health

02 Education

03 Smart Cities

04 Smart Farming

05 Aviation Safety

In addition to these, we offer virtual mobility programmes, through video conferences and short exchange programmes in the form of international weeks abroad. We host an annual international week at Belgium Campus where students from different disciplines meet to share, co-create and pioneer new projects both locally and abroad.

Belgium Campus provides the opportunity for one-year internships at companies and organisations in Belgium, as well as study opportunities overseas. Our mobility programmes include short-stay programmes from one week to three months. Our longer mobility programmes of one or more years include internship opportunities in Belgium and postgraduate studies through Erasmus Mundus or VLIR-UOS programmes.





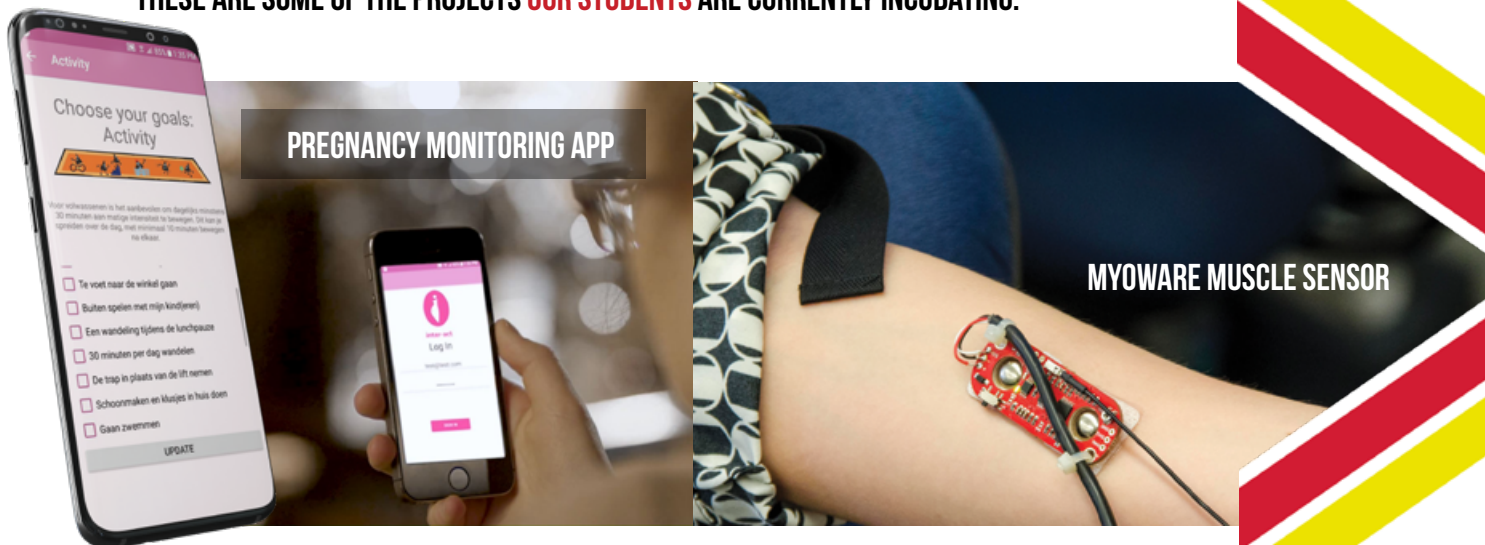


## BOTLHALE VILLAGE

A 'KNOWLEDGE VILLAGE' WHERE OUR INNOVATION PROJECTS ARE TURNED INTO CUSTOMER-CENTRIC TANGIBLE SOLUTIONS

Botlhale is the Tswana word for 'knowledge'. Our 'Knowledge Village' offers an incubation hub where research is valorised into tangible solutions. It provides an enabling, supportive environment to incubate and accelerate IT solutions for the market. The IT solutions engineered here address – in a collaborative way – developmental challenges. They create a positive social impact and stimulate economic growth.

THESE ARE SOME OF THE PROJECTS **OUR STUDENTS** ARE CURRENTLY INCUBATING:



### OUR STUDENT PROJECTS

01

## MOBILE HEALTH



### INTERACT

#### GIVING PREGNANT MOMS A HEALTHY BOOST

Our students developed Interact, a mobile app used to help women maintain a healthy lifestyle between and during pregnancies. Supported by a coach, moms will receive an app on their smartphones which monitors weight, eating patterns, physical activity and mental well-being. Studies show that face-to-face counselling of pregnant and post-partum mothers is highly beneficial for healthy moms and babies.

### RESNA **AN AWARD WINNING IDEA**

#### THE HOPE PROJECT EXPRESSES EMOTION THROUGH AAC

Our students, in partnership with Electrical Engineering students from Penn State University, won the 2016 RESNA Student Design Competition. They designed a device that allows individuals with motor neurone disease, who use Augmented Alternative Communication (AAC), to express their emotions.

## MORE STUDENT PROJECTS

02

## EDUCATION

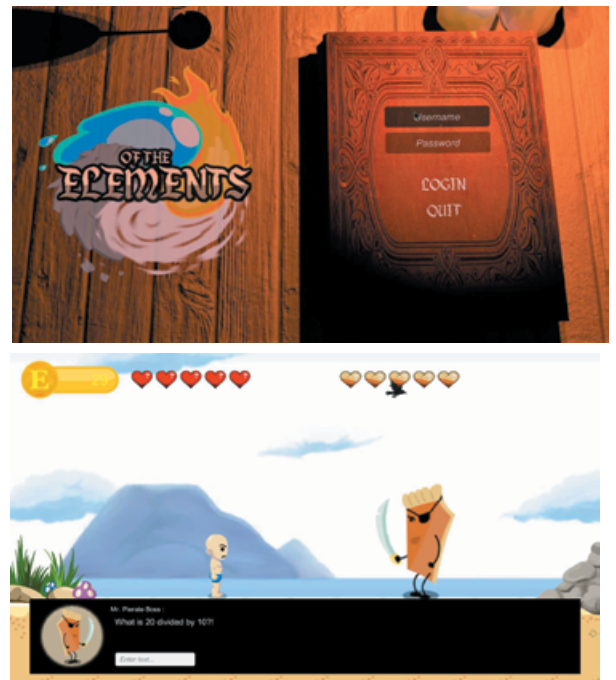


### OF THE ELEMENTS

**THE BEST WAY TO EDUCATE IS WITHOUT THE LEARNER KNOWING**

Of the Elements is an educational game aimed at young children with learning disabilities. The goal is to encourage learning at a young age and prevent the usual discouragement we see so often today. This is achieved through the best way we know, which is teaching them without them knowing.

By using an interesting and engaging setting with dragons, princesses and heroes, we aim to grab a child's attention and have them keep coming back for more. With a team consisting of people from all over the world, we aimed to change the way we view education for the better.



03

## SMART CITIES



### TSHWANE E-GOVERNMENT

**THE NEXUS BETWEEN CITIZENS AND GOVERNMENT SERVICES**

The Tshwane E-government app strengthens the fostering of participatory democracy, accountability and responsiveness (Batho Pele principles). Through this application, citizens and stakeholders are given an opportunity to raise issues, provide input and influence City of Tshwane policies and strategies. The App also enables users to view the latest decisions that were taken and currently being handled by the city. Citizens are able to leave feedback, give suggestions and raise new topics. Feedback received from the citizens is used by officials as an opportunity to deliver services in an effective and efficient way.

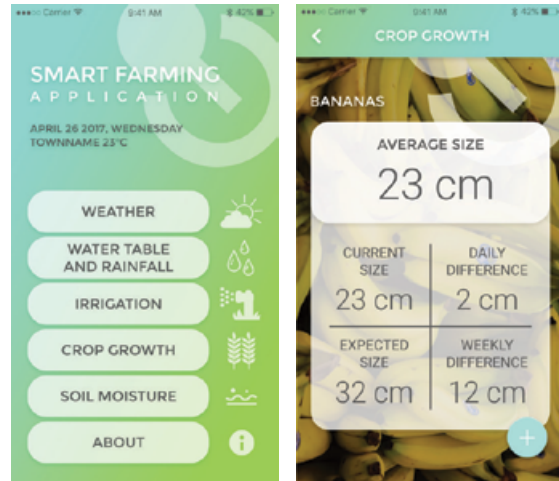




## SMART FARMING

### OFFERING REAL-TIME INFORMATION AND RECOMMENDATIONS TO FARMERS

The Smart Farming project is centred around helping local farmers make more informed decisions regarding important aspects of farming, such as irrigation and harvesting. Working together with students from Penn State University, our students are integrating technology into everyday farming for better harvesting results in small, local communities.



## FISHIFY

### MANAGEMENT APPLICATION FOR YOUR AQUAPONICS FARM

This application provides the user with a step-by-step guide on how to set up an aquaponics system, manage the entire aquaponics farm, do regular follow-ups and schedule maintenance. It clearly indicates what is being done wrong and helps to bring the whole system back into balance in the process. The app also contains general information and useful tips about aquaponics.



## IRIS MOTION DETECTOR

### SAFETY PROTOCOL TO ENSURE PILOT SAFETY ON-BOARD

This project aims to improve the safety of single-manned planes. Pilots can easily experience hypoxia (at high altitudes, there isn't sufficient oxygen in the plane which can result in the pilot becoming unconscious or falling asleep). This technology will monitor the eye activity of the pilot and if it determines that the pilot has lost consciousness, it will automatically engage the auto-pilot system and send out a distress signal.

## ALTITUDE DISTANCE SENSOR

### COMMON TECHNOLOGY USED IN INNOVATIVE WAYS

Following the scenario of the pilot losing consciousness, the auto pilot now has to bring the pilot to a lower altitude so that he or she can regain consciousness. This is a risky situation, as a safe altitude in a mountainous terrain can be life threatening. Altitude distance sensors are in place to assess the terrain below and determine a safe area where the plane can be brought to a lower altitude.





## LOCKHEED MARTIN

### INTRA-DRONE COMMUNICATION FOR COLLISION-FREE FLYING

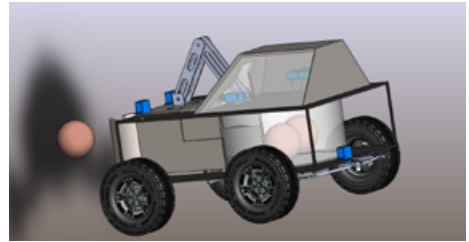
Our students teamed up with Electrical Engineering students from Penn State University to design and build custom, lightweight drones. These drones were synchronised to scan a crowd of people or surface area whilst freely flying and navigating. Belgium Campus students developed software that allowed intra-drone communication, enabling the drones to fly in formation, without colliding.



## BOEING

### MARS ROVER REMOTELY CONTROLLED BY BELGIUM CAMPUS STUDENTS

Boeing collaborated with our students and students from Melbourne University, Australia, providing them with a budget of \$1 000 to design a safe, internet-based control system that allows 'pilots' from Belgium Campus to remotely control the Mars Rover to pick up surface samples.



**THESE PROJECTS ARE A TESTAMENT TO WHAT IS POSSIBLE, WHEN YOU REFUSE TO ACCEPT THE IMPOSSIBLE... WE'RE DRIVING REGIONAL DEVELOPMENT THROUGH SPECIALISED AND FOCUSED OFFERINGS.**

“

It's phenomenal what they have laid out in terms of the curricula, how they're thinking about making sure that it's not just about the classroom, but their whole philosophy about making sure there's practical experience and application.

— MARTINE CADET, VICE-PRESIDENT, GLOBAL ENABLEMENT (PRE-INFOR AND AT-INFOR TALENT).

We do these projects because we have seen in the past that once you have peaked a student's interest with an interesting project, that his or her marks are ever increasing”

— JAN ROMBOUTS, CHAIRMAN, BELGIUM CAMPUS.

”

## AVIATION RESEARCH





**BECOME ONE OF THE MOST SOUGHT-AFTER INDUSTRY EXPERTS  
OR CREATE A CAREER THAT DOES NOT YET EXIST**



There is an insatiable need for industry experts, and a call for young, innovative minds to boost industries in pioneering, inventive ways. Belgium Campus shapes you into an expert, equipping you with the necessary skills to make waves in the industry of your choice, or to invent a whole new career.



**RECRUITMENT EVENT**



**BELGIUM CAMPUS  
GRADUATES ARE  
INDUSTRY'S PREFERRED  
CHOICE!**



## SOFTWARE ENGINEERS



### THE ARTISTS OF IT, SCULPTORS OF IDEAS INTO PRACTICAL SOLUTIONS

- ▶ Turn abstract ideas into practical applications that provide solutions to everyday problems.
- ▶ Work alongside business intelligence specialists to conceptualise, design and develop dynamic solutions to real-world problems.
- ▶ Require ingenuity, discipline, technical expertise and the ability to mobilise teams of people to build complex systems, such as Facebook, IBM Watson and the Google back-end cluster.

## SOFTWARE DEVELOPERS



### THE IMAGINEERS OF THE MECHANICS THAT SUPPORT OUR DAILY LIVES

- ▶ Coders who write and maintain the source code behind computer programs, such as mobile apps and games.
- ▶ Work alongside software engineers to pioneer software products that are used daily.
- ▶ Need to be imaginative and goal-oriented, keeping the bigger picture in mind, but never losing sight of the finer details.

## DATA SCIENCE EXPERTS



### TRANSFORMERS OF RAW DATA INTO USEFUL INFORMATION

- ▶ Leverage technology to extract raw data and convert it into valuable and dynamic information.
- ▶ Place valuable information in the hands of business decision-makers to enable them to operate optimally.
- ▶ Require an expert command of mathematics.

## INFRASTRUCTURE EXPERTS



### CONSTRUCTORS OF THE IT FOUNDATIONS THAT ALL SYSTEMS ARE BUILT ON

- ▶ Construct all the computer hardware- and software-related components, connectivity systems, network resources and services that are required for an organisation to exist, operate and communicate.
- ▶ Manage system infrastructure and render daily technical support to ensure that the organisation runs optimally.

# OUR CURRICULUM

## A MESSAGE FROM THE DEAN: PROF THINUS KRITZINGER

Aristotle once said, "For the things we have to learn before we can do them, we learn by doing them." This rings true for me as an educator, especially given the fact that we currently live in a world where one's attention span has been reduced to 140 characters.

## A RELEVANT EDUCATION

**SINCE 1999, BELGIUM CAMPUS HAS EMBODIED A MISSION STATEMENT TO STRIVE TOWARD PROVIDING A QUALITY EDUCATION OF INTERNATIONAL STANDARDS.**

To us, what is most important is that our students are not only educated but are given the tools that ensure they are industry-ready and employable. The world of technology is not only transforming before our very eyes, it is also in a constant state of flux, where what is relevant today may not be entirely relevant in the future. Due to this rapidly changing world in which we live, we decided in 2018, to relook at our curriculum and teaching models and develop one that would not only future-proof students for the next five years but also teach them how to use their analytical minds and move away from only studying technology that is currently in existence. Guided by our industry partners, we will continually adapt our modules to ensure our students are ahead of the curve in terms of new and emerging technologies and ones that are required in the workplace.

## THE WORKPLACE OF THE FUTURE

With this in mind, we worked together with our industry partners to develop a curriculum that grooms graduates for the workplace of the future. Our curriculum places considerable importance on experiential learning, where students are exposed to real-time and real-life projects in the workplace from their very first year. Our experiential learning methodology uses critical thinking, problem-solving and decision making to deliver a subject or module and has been proven globally to accelerate learning. By providing a safe learning environment where students can apply their minds to real-world scenarios, we bridge the gap between theory and practice, which in turn plays a pivotal role in retaining concepts and ideas. This affords them the opportunity to experiment as they receive real-time feedback and the opportunity to reflect.

## WHAT SETS US APART

Experiential learning produces self-directed learners who have knowledge of what is required for real-world success, so it's not surprising when we hear from our industry partners about how well our students perform in their internships and first-time roles. This transpires when I engage with leaders in the industry, what has proven to be a key differentiator in a Belgium Campus degree or diploma, is our unique focus on soft skills, presentation skills, business acumen and work ethic. In addition to this, we provide opportunities for students to work collaboratively with international universities and industry partners. Our intrinsic focus on collaboration and learning from each other benefits our students tenfold because they are directly involved in the problem-solving activity or event and the level of ownership of the outcome is high.

Learning at Belgium Campus goes beyond the classroom and is delivered through both our culture and values, through the implicit and hidden curriculum that in turn grooms our students into dynamic young adults who go on to excel in the roles they are offered upon graduation.

## THE NEW WAVE

**WE ARE IN THE VERY HEART OF A DIGITAL REVOLUTION, WITH CONDITIONING LEARNING AND STATIC CLASSROOMS BECOMING A THING OF THE PAST.**

The entire industry is moving towards cloud-based solutions, artificial intelligence and IoT; a key focus in our new curriculum. Coupled with in-service training and valuable exposure to local and international projects, this is a radical departure from the traditional learning methods currently employed by higher education institutes in the region.

Education is undergoing a substantial transformation, with experiential learning being recognised globally as the future of education. At Belgium Campus, we provide a virtual setting for students to bridge theories and concepts taught in the classroom with real-life experience. Through this dynamic learning environment, students understand technology at a deeper level, while creating memorable learning experiences.

“

**IN THE PAST FEW YEARS I HAVE SEEN AN INCREASE IN THE DEMAND FOR OUR STUDENTS, AND THAT IS BECAUSE OF THE QUALITY OF OUR STUDENTS. WE HAD TO INTRODUCE RECRUITMENT EVENTS DUE TO THE HIGH DEMAND FROM COMPANIES THAT WANT TO PLACE OUR STUDENTS FOR IN-SERVICE TRAINING.**

— THEODORUS KRITZINGER, DEAN: FACULTY OF INFORMATION TECHNOLOGY

”

## OUR ACADEMIC STAFF

**GREAT UNIVERSITIES BEGIN WITH GREAT LECTURERS AND TEACHERS.**

Known for our influence and impact in the work environment, Belgium Campus has a multifaceted faculty and staff from across the region and the globe. As a hub of collaboration and innovation, our iTVersity is home to a community of outstanding and vibrant people; a nucleus of exchange, where students and faculty are bound together in intellectual exploration and the exchange of ideas, knowledge and values.

Our learning methodologies and relevant curriculum place our students at the forefront of knowledge and the workplace of the future. Our academic staff go through a rigorous selection process, where we ensure they not only embody the theoretical knowledge set out in our curriculum but have the practical know-how, soft skills and life skills our students will, in turn, learn during their time at Belgium Campus.

Diversity lives in the spirit of Belgium Campus and is further represented by the members of our academic community. We offer our students, staff and researchers a dynamic academic environment at the helm of local, regional and global projects. From our strategic networks and partnerships, international joint programmes and exchanges, and emphasis on international mobility opportunities, we develop skilled and employable graduates who are ready for both the national and international labour markets.

# THE COURSES WE OFFER



## FOUNDATION PROGRAMMES

Our foundation programmes comprise of extra classes to assist students to prepare for their Gr11 and Gr12 examinations, and to ensure that their maths is at the required level to commence with a higher education degree or diploma. These classes are at no cost to the student, except for the maths bridging programme - a programme for students who would like to do one of our degree programmes but do not meet the necessary mathematics requirements.

- ▶ **Grade 11 & 12 Mathematics, IT, CAT – June holidays**
- ▶ **Maths bridging programme: held in January**



This empowering diploma offers the shortest course of study and the least expensive academic credential. It develops your core competency in a single discipline and helps you to acquire new skills to quickly launch your career.

**ALSO AVAILABLE FOR HEARING IMPAIRED AND DEAF STUDENTS.  
GO TO PAGE 30 TO FIND OUT MORE.**

The academic programme consists of a generic foundation phase and a specialisation phase. Students are groomed to become complete professionals, through a strong focus on knowledge, execution and professional skills, which are seamlessly integrated into the curriculum.

The foundation phase gives insight into the field of IT, while the specialisation phase is career-oriented. The diploma specialisations are essential and are aligned with real-world industry requirements.



**DURATION:**  
**3 YEARS**

**NQF:**  
**LEVEL 6**

**CREDITS:**  
**360**

**SAQA ID:**  
**62621**

**2 YEARS ACADEMIC  
1 YEAR OF WORKPLACE  
TRAINING**

## SPECIALISATION IN SOFTWARE DEVELOPMENT

This specialisation enables you to become a world-class programmer, gaining knowledge in object-oriented and event-driven programming. The applications you develop will be deployed on desktops, networked computers, the internet and multiplatform devices.

In the working world, you'll typically be part of a team who turns the designs and programming instructions received from systems architects, software engineers or systems designers into working software Programs that satisfy the requirements of the parties who commissioned them.

### SUBJECTS INCLUDE:

Computer Architecture, Database Development, End User Computing, Information Systems, Innovation and Leadership, Network Development, Programming, Web Programming and Applied Mathematics.

### ELECTIVES INCLUDE:

Business Management, Entrepreneurship, Enterprise Systems and Internet of Things.

### CAREER OPTIONS INCLUDE:

Programmer, database developer and web programmer.

### MAJOR TECHNOLOGIES YOU WILL LEARN TO USE:

.NET Framework, C#, Java, SQL, Angular JS, PostgreSQL, BiSQL and MongoDB.

### WHAT YOU WILL BE ABLE TO DO AFTER YOU GRADUATE:

- ▶ Build web-based and mobile applications (apps).
- ▶ Design and build interactive systems and solutions.
- ▶ Conceptualise and build databases and their structures.
- ▶ Understand and evaluate business problems, and create solutions to address them.
- ▶ Develop complex algorithms and code them into Programs.

## SPECIALISATION IN INFRASTRUCTURE

We focus here on training future systems and network administrators, who are responsible for installing, maintaining and upgrading networked desktops, servers and mobile devices. Your job will be to ensure that users have access to all resources on the network, internet or in the cloud – no mean feat! – while safeguarding the intellectual property of individuals or companies.

### SUBJECTS INCLUDE:

Computer Architecture, Database Development, End User Computing, Information Systems, Innovation and Leadership, Network Development, Programming, Web Programming, Applied Mathematics, Database Administration, Operating Systems, Server Automation and Wireless Networking.

### ELECTIVES INCLUDE:

Business Management, Entrepreneurship, Enterprise Systems and Internet of Things.

### CAREER OPTIONS INCLUDE:

Taking charge of the administration of the IT infrastructure of a small to medium-sized company or becoming a specialised administrator (network, mail, security) for larger organisations.

### MAJOR TECHNOLOGIES YOU WILL LEARN TO USE:

TCP/IP, Linux, Windows server, Cisco, Mainframe, Apache, firewall systems, email systems and Mainframe zOS.

### WHAT YOU WILL BE ABLE TO DO AFTER YOU GRADUATE:

- ▶ Create, maintain and update the IT infrastructure of corporations and businesses.
- ▶ Identify and address technical issues experienced by business.
- ▶ Assist with issues on business networks.
- ▶ Understand and manage outgoing and incoming connections, as well as internal networks.
- ▶ Ensure that networks are secure and maintained.



# THE COURSES WE OFFER

## CONTINUED



A bachelor degree remains the entry standard in many professional careers. Its long-term benefits make it well worth the initial investment, as it allows you professional entry into some of the top names in IT, along with the chance to create your own enterprise within the sector.

It is less mathematically oriented than the 4-year Bachelor of Computing and focuses on Information Systems modules, which cover an extensive range of topics – from mobile and wireless networks, to artificial intelligence (AI) and intelligent systems.

By opting for various specialist electives, you can broaden your skills and explore the various avenues available to software developers. Many interesting opportunities such as mobile and web-based app developments, or even game developments, are open to you.

**The academic programme consists of a generic foundation phase and a specialisation phase. Students are groomed to become complete professionals, through a strong focus on knowledge, execution and professional skills, which are seamlessly integrated into the curriculum.**

The foundation phase gives the student insight into the field of IT, while the specialisation phase is career-oriented. The degree specialisations are essential, and are aligned with real-world industry requirements.



**DURATION:**  
**3 YEARS**

**NQF:**  
**LEVEL 7**

**CREDITS:**  
**360**

**SAQA ID:**  
**94121**

**ACADEMIC TRAINING**

## SPECIALISATION IN SOFTWARE DEVELOPMENT

**This specialisation enables you to become a world-class programmer, gaining knowledge in object-oriented and event-driven programming. The applications you develop will be deployed on desktops, networked computers, the internet and multiplatform devices.**

In the working world, you'll typically be part of a team and receive programming instructions from systems architects, software engineers or systems designers.

### SUBJECTS INCLUDE:

Computer Architecture, Database Development, Information Systems, Innovation and Leadership, Mathematics, Networking Development, Programming, Statistics, Web Programming, Enterprise Systems, Linear Programming, Project Management, Data Analytics and Software Engineering.

### ELECTIVES INCLUDE:

Business Management, Entrepreneurship, Internet of Things, Software Testing, Innovation Management and User Experience Design.

### CAREER OPTIONS INCLUDE:

Programmer, database developer and web programmer.

### MAJOR TECHNOLOGIES YOU WILL LEARN TO USE:

.NET Framework, C#, Java, SQL, Angular JS, PostgreSQL, BiSQL, MongoDB and Python.

### WHAT YOU WILL BE ABLE TO DO AFTER YOU GRADUATE:

- ▶ Build web-based and mobile applications (apps).
- ▶ Design and build interactive systems and solutions.
- ▶ Build and conceptualise databases and their structures.
- ▶ Understand and evaluate business problems, and create solutions that will address them.
- ▶ Develop complex algorithms and code them into programs.
- ▶ Develop games.

## BACHELOR OF INFORMATION TECHNOLOGY PART-TIME

The Bachelor of Information Technology is now also available part-time. This is a full contactmode programme, with lectures presented on Saturdays. This option was created for those who are passionate about software development, but are unable to attend the programme during the week.

**Students who opt to study part-time enjoy the full campus experience, with all the facilities and support systems that are available to full-time students, including guidance, mentorship and counselling.**

### ADDITIONAL INFORMATION

- ▶ Classes span 30 Saturdays throughout the year.
- ▶ Five-year course for students who have not studied IT in the past.
- ▶ Students with prior IT qualifications can complete the course in a shorter period (based on recognition of prior learning).
- ▶ Classes are from 08h00-17h00.

# THE COURSES WE OFFER

CONTINUED

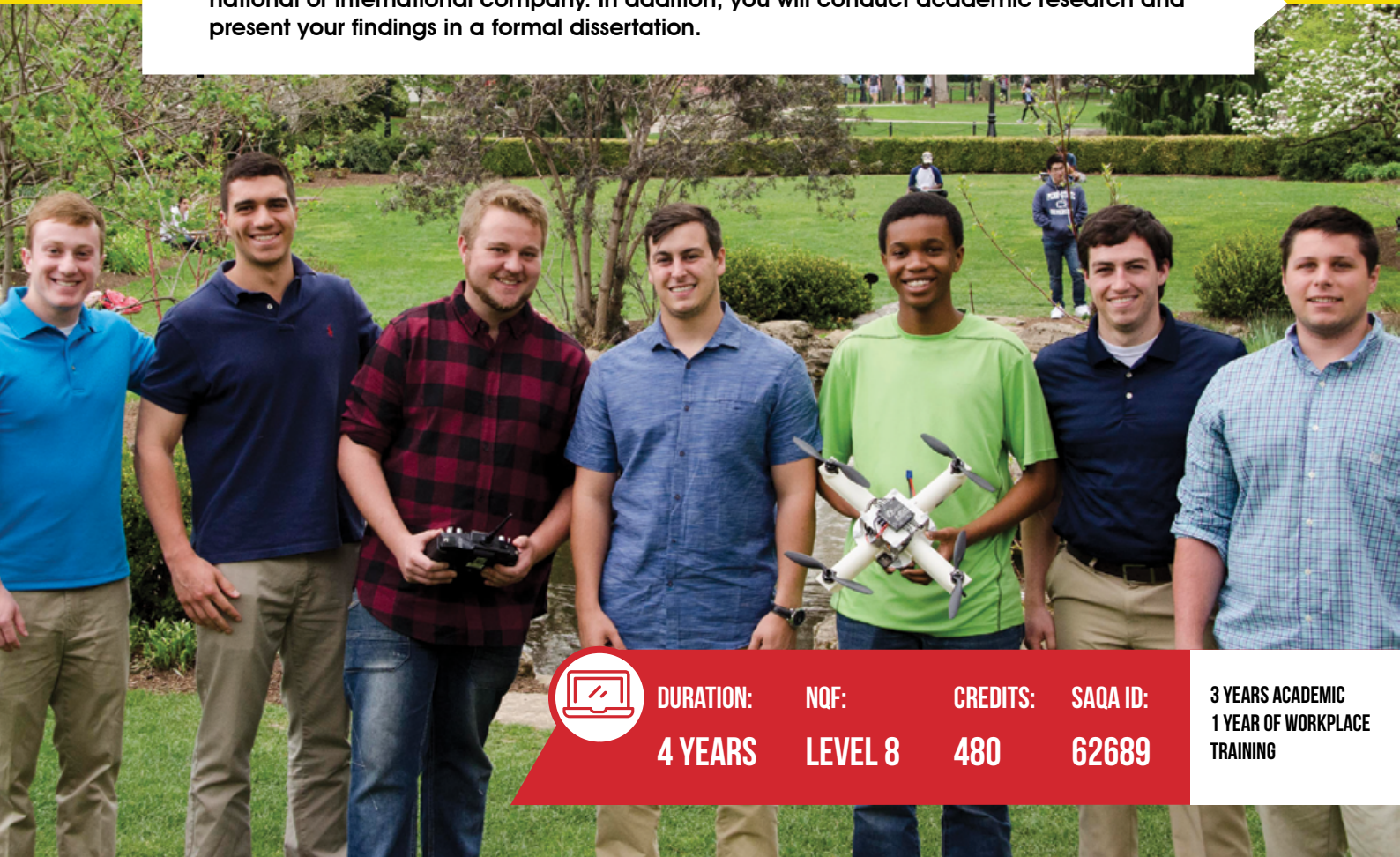


Troubleshooting and formulating viable solutions are essential computing skills. Our Bachelor of Computing will enable you to apply theories and integrate them in real-world environments, across multiple disciplines, by presenting best practices and solutions.

The curriculum contains the theoretical foundation for the conceptualisation and modelling of solutions, the use of abstract, analytical and critical thinking, and it refines the student's ability to recognise and solve problems.

Practical assignments and projects completed in this degree are congruent with daily practices in the working world, so assessments are always done with both academic content and practical implementation in mind. This means you will acquire business-specific and 'soft skills', including communication skills, customer satisfaction training, the ability to work as a team player/team leader, and the ability to teach others.

In the fourth year, you will have the remarkable opportunity to complete an internship at a national or international company. In addition, you will conduct academic research and present your findings in a formal dissertation.



**DURATION:**  
**4 YEARS**

**NQF:**  
**LEVEL 8**

**CREDITS:**  
**480**

**SAQA ID:**  
**62689**

**3 YEARS ACADEMIC  
1 YEAR OF WORKPLACE  
TRAINING**

## SPECIALISATION IN DATA SCIENCE

**You will gain in-depth knowledge of the processes and techniques used to transform data into information, an essential skill for effective decision and money-making. You will learn how to collect and organise data into large-scale data stores and warehouses.**

Data mining is a fast-growing discipline that extracts valuable information from available data. An information specialist must master mathematical and statistical analysis to generate value for companies. You will learn how to present results in reports to stakeholders.

### **SUBJECTS INCLUDE:**

Computer Architecture, Database Development, Information Systems, Innovation and Leadership, Linear Programming, Mathematics, Statistics, Networking Development, Programming, Web Programming, Data Warehousing, Data Science and Database Administration.

### **ELECTIVES INCLUDE:**

Business Management, Entrepreneurship, Internet of Things, Software Testing, Innovation Management, Machine Learning and User Experience Design.

### **CAREER OPTIONS INCLUDE:**

Decision support specialist, data miner, data analyst, data visualiser, business systems analyst and data warehouse manager.

### **MAJOR TECHNOLOGIES YOU WILL LEARN TO USE:**

.NET framework, C#, Java, SQL, Oracle, mathematical and statistical analysis packages, BI system, Angular JS, PostgreSQL, BiSQL, Mongo DB and Python.

### **WHAT YOU WILL BE ABLE TO DO AFTER YOU GRADUATE:**

- ▶ Analyse and interpret data into meaningful structures.
- ▶ Create and present reports based on data and information gathered.
- ▶ Provide solutions based on the data and information gathered.
- ▶ Understand and evaluate business problems and create solutions that will address them.

### **ADDING NEW STREAMS TO OUR BACHELOR OF COMPUTING:**

- ▶ Artificial intelligence
- ▶ Data sciences
- ▶ Cyber-security
- ▶ Software engineering

## SPECIALISATION IN SOFTWARE ENGINEERING

Object-oriented, event-driven and asynchronous programming are taught and applied to a range of programming languages, in order to construct desktop and distributed applications. It is essential that the technicalities and intricacies of your role are understood in utmost detail.

### **BY SPECIALISING IN SOFTWARE ENGINEERING YOU WILL LEARN ABOUT:**

- ▶ The software development life cycle.
- ▶ Analysing business requirements.
- ▶ Designing solutions using the industry-standard Unified Modelling Language.



**You will be able to pursue a career constructing data-driven business systems, technical software that controls automated hardware systems and robots, or applications for the lucrative gaming industry. You will develop skills in technical areas, business systems analysis and process engineering.**

Elective subjects allow you to specialise in game development, business application control and user interface systems.

**SUBJECTS INCLUDE:**

Computer Architecture, Database Development, Information Systems, Innovation and Leadership, Linear Programming, Mathematics, Networking Development, Programming, Statistics, Web Programming, Software Analysis & Design, Software Engineering and Project Management.

**ELECTIVES INCLUDE:**

Business Management, Entrepreneurship, Internet of Things, Software Testing, Innovation Management, Machine Learning and User Experience Design.

**CAREER OPTIONS INCLUDE:**

Software engineer, software designer, software architect, lead programmer, database designer, project manager, mobile application developer, web application developer.

**MAJOR TECHNOLOGIES YOU WILL LEARN TO USE:**

.NET framework, C#, Java, SQL, Oracle, XML, HTML 5, XAML, UML, project management, Visio, Angular JS, PostgreSQL, BiSQL, Mongo DB and Python.

**WHAT YOU WILL BE ABLE TO DO AFTER YOU GRADUATE:**

- ▶ Conceptualise and design web-based and mobile applications (apps).
- ▶ Document and demonstrate solutions by developing project scopes and supporting documentation.
- ▶ Build databases and their structures.
- ▶ Understand and evaluate business problems and create solutions to address them.
- ▶ Evaluate and implement solutions and ensure specific courses of action are taken to accomplish the objectives and goals set forth by those who commissioned you.

# THE COURSES WE OFFER

## CONTINUED



Our national certificate programmes offer an affordable option to quickly launch your IT career. They also serve as a stepping stone into one of our other programmes if you did not meet the necessary entry requirements.

Accredited by MICT SETA and aligned on the NQF with the South African Qualifications Authority, these certificates are created in line with our mission to promote gainful employment by training young people to understand, use and apply IT in effective, efficient and ethical ways.



As purely vocational programmes, these certificates are designed to provide you with the immediate, hands-on, specialised knowledge, necessary to quickly enter industry. You will be given practical training in solving operational business problems in the areas of systems hardware, networking, security and database components. You will also gain the theoretical knowledge to design, develop, test and document software solutions, including object-orientated programming, used in today's business environment.

## INFORMATION TECHNOLOGY (SYSTEMS DEVELOPMENT)

On completion of this qualification you will possess a specialised set of skills that will allow you to enter the working world with confidence. You will have a solid grasp of computer industry concepts and be able to work in areas of systems development with intermediate technical difficulty. This qualification provides entry into the areas of systems development at NQF level 5. It will provide you with the necessary undergraduate foundation to further your studies in the IT field at a higher education level.



**ENTRY REQUIREMENTS:**  
**A NATIONAL SENIOR CERTIFICATE (NQF4) WITH A HIGHER CERTIFICATE ENDORSEMENT**



**DURATION:**

**1 YEAR**

**NQF:**

**LEVEL 5**

**CREDITS:**

**131**

**SAQA ID:**

**48872**

## INFORMATION TECHNOLOGY (DATABASE DEVELOPMENT)

The amount of data in the world is increasing at an exponential rate. The emergence of 'big data' has completely transformed how companies do business and the way they understand their customers, with companies using large volumes of data to identify trends and patterns and predict future consumer behaviour.

With the above in mind, it is not surprising that the demand for skilled data experts with advanced database skills is on the increase. This qualification will provide you with these skills, allowing you to quickly find employment and thrive in today's business environment. The knowledge and skills you gain will equip you to complete complex tasks and procedures in the Data Science space.



**ENTRY REQUIREMENTS:**  
**A RELEVANT CERTIFICATE AT NQF LEVEL 5**



**DURATION:**

**1 YEAR**

**NQF:**

**LEVEL 6**

**CREDITS:**

**120**

**SAQA ID:**

**71850**



**BELOW IS ALL THE INFORMATION YOU WILL NEED SURROUNDING OUR FEES.**

## **TUITION FEES**

Fees are for an entire academic year, and cover tuition, exams, examination rewrites (if any) and almost all books. Under limited circumstances some books must be bought by the student at his/her expense. Students will receive a full list of any additional books required, during the first week of the academic year.

## **RESIDENCE FEES**

Our residence fees cover accommodation for 24 hours a day, seven days a week (except during summer holidays). The fees are inclusive of 3 balanced meals a day from Monday to Friday (except during campus and public holidays). The annual fee varies depending on the type of room selected. Please visit the Important Documentation section on our website and download our Residence Booklet for information about our residence options.

## **PAYMENT OF FEES**

Those responsible for the payment of fees can either pay the full tuition and residence fees at the start of the academic year, interest-free, or they can pay the fees in 10 monthly instalments. The option of instalments has a 10% interest charge and is only available for South African citizens. Prices are subject to change without notice. Please consult our latest and full fee schedule on our website.

## **STUDENT LOANS**

Student loans are available through various banks (T&Cs apply). Students are required to pay back the interest during their studies but will only need to start repaying their loan once they have graduated.

## **SCHOLARSHIPS AND BURSARIES**

We believe in providing ambitious students with a path to pursue their dreams, which is why we have a variety of bursaries available to prospective students: to reward academic excellence, for special needs students or for dedicated groups of less fortunate individuals. To find out if you qualify for a bursary, visit the applicant portal on our website to apply and indicate that you require financial assistance.



## OPPORTUNITY FOR A CORPORATE SPONSORSHIP

You can choose to be placed on a waiting list for a corporate sponsorship. These sponsorships are subject to our corporate partners. Our corporate sponsors stipulate their own requirements, and you need to come from a disadvantaged background to qualify. The final selection of candidates for corporate sponsorships is not made by Belgium Campus iTversity but at the discretion of our corporate sponsors.

“

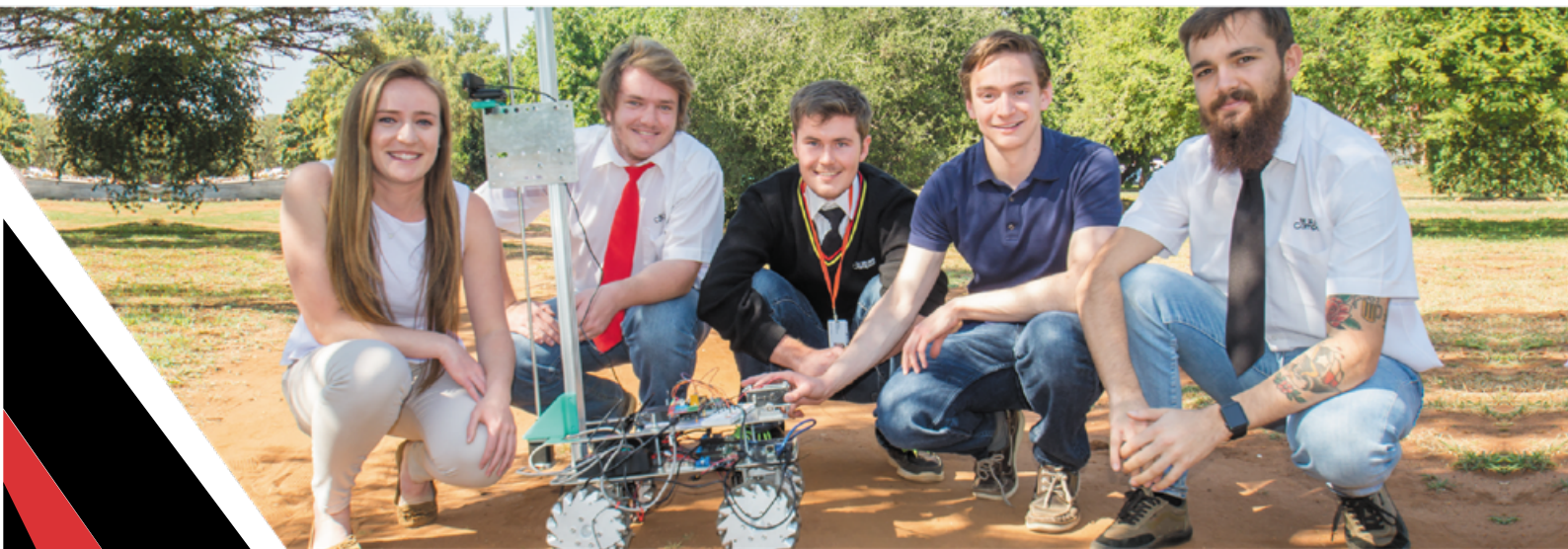
**THE BIG DATA COURSE AT BELGIUM CAMPUS WAS COMPLETELY DIFFERENT, BECAUSE YOU ACTUALLY SAW THE PRACTICAL VALUE OF DATA – NOT JUST THE TECHNIQUE OF HOW TO INTERACT WITH IT, BUT THE VALUE YOU CAN GAIN AND THE BUSINESS DECISIONS YOU CAN MAKE FROM DATA.**

– **RIAAN VAN ROOYEN**, SOFTWARE ENGINEERING STUDENT, **BELGIUM CAMPUS.**

”



## IMPORTANT DATES





# ADMISSION REQUIREMENTS

**ALTHOUGH BELGIUM CAMPUS DOES NOT SET AN AGE LIMIT FOR THE STUDENTS WE ACCEPT, OUR MINIMUM REQUIREMENTS ARE AS FOLLOWS:**

**A NATIONAL SENIOR CERTIFICATE CERTIFIED BY UMALUSI OR AN EQUIVALENT FOREIGN QUALIFICATION CONVERTED BY THE SOUTH AFRICAN QUALIFICATIONS AUTHORITY (SAQA).**

## **NATIONAL CERTIFICATE PROGRAMMES**

- A National Senior Certificate endorsed for a Higher Certificate.

## **DIPLOMA IN INFORMATION TECHNOLOGY**

- A National Senior Certificate endorsed for a Diploma.

## **DEGREE PROGRAMMES**

- A National Senior Certificate endorsed for a Degree.
- 50% or more for English on the NSC. Foreign students are required to produce their SAQA converted qualification listing English as a subject or complete an English proficiency test.
- 50% or more for pure mathematics on the NSC. If you did not take pure mathematics or achieved less than 50% there is one more option available for you to gain entry, attend our Mathematics Bridging Course. Should you achieve the required marks (50% for BIT and 70% for BComp), only then will you be granted entry. Foreign students are required to produce their SAQA converted qualification listing mathematics as a subject.

## **NOTE**

Prior knowledge or experience in Computer Science is an advantage but is not an admission requirement.

Students with existing qualifications or experience in the IT field can apply for Recognition of Prior Learning (RPL).





You can apply to or enrol at Belgium Campus iTversity via our website or at any of our three campuses; Tshwane, Ekurhuleni or Nelson Mandela Bay.

If you are unsure of the process you need to follow, or which course you would qualify to enrol for, get in touch at +27(0)10 593 5368 to speak to our admission staff for assistance.

## SCHOLARSHIP TESTS

Belgium Campus iTversity offers a scholarship test to aid in the funding for your higher education. During the enrolment process, state whether you will require partial assistance with funding. The result of your test will determine the scholarship amount you will be granted. THIS TEST CAN ONLY BE TAKEN ONCE PER STUDENT AND THERE IS A CUT-OFF DATE.

You can take our scholarship test on our website at home or schedule an appointment at any of our campuses to take the test. To book a test appointment call:

Tshwane Campus: +27(0)10 593 5368

“

**ICT IS A PILLAR- AN ENABLER, FOR ANY INDUSTRY- GLOBALLY, NOT JUST IN SOUTH AFRICA. BELGIUM CAMPUS PARTNERED WITH US, AS THE UNIVERSITY REALISED THAT THERE ARE STUDENTS WHO ARE CAPABLE OF MAKING IT IF THEY GET THE RIGHT OPPORTUNITY.**

**— ZOLA EHRENS, MANAGING DIRECTOR, SOUTH AFRICAN WOMEN IN ICT FORUM.**

”





All our facilities are purposely designed to offer you a world-class education, in a fun, enriching and comfortable environment, supported by the latest technology and state-of-the-art facilities.

## CAMPUSES

- ▶ Tshwane campus in Pretoria North (main campus) **PTA**
- ▶ Ekurhuleni campus in Kempton Park **KP**
- ▶ Nelson Mandela Bay campus in Port Elizabeth **PE**

## CLASSES (PTA, KP, PE)

All our classes are limited to 30 students only, to provide an interactive learning environment with an emphasis on individual attention.

## LEARNING FACTORIES (PTA)

We have created five specialised, physical innovation spaces in which students can develop, innovate and construct the devices and structures that form part of their practical projects, providing them with a hands-on testing environment.

## LIBRARY (PTA, KP, PE)

We host a comprehensive eBook library that can be accessed from anywhere on campus. This is complemented by a conventional library that is stocked with a wide range of academic literature.

## VIRTUAL CLASSROOM (PTA)

In this classroom, our students attend joint lectures as they work on international projects with students from Penn State. This class allows students to collaborate in a multi-disciplinary environment to develop solutions for real industry partners.

## STUDY ROOM (PTA, PE)

The study room is available to all current students and is equipped with computers, with all the necessary software to allow you to complete your practical projects and assignments.





## FACULTY AND STAFF

All our faculty and staff members (including management) can be viewed on our website: [belgiumcampus.ac.za/faculty](http://belgiumcampus.ac.za/faculty)

## CONNECTIVITY

All our campuses offer easy access to the wireless network via laptops or smartphones.

## CAFETERIA (PTA, PE)

The cafeterias at our Tshwane and Nelson Mandela Bay campuses serve three healthy, balanced meals a day from Monday to Friday. Students in residence over weekends use the weekend kitchen to prepare their own meals, or they can buy meals from our tuck shop. All three of our campuses have a daily tuck shop and vending machines.

## ACCOMMODATION (PTA, PE)

Our Tshwane and Nelson Mandela Bay campuses offer several accommodation options, on and off campus – from single and twin rooms, to rooms housing up to four students, with en-suite and communal bathrooms.

Accommodation in private homes in surrounding neighbourhoods is also offered. A laundromat is available on campus. Students in residence over weekends can make use of the student kitchen, or buy meals from the tuck shop.



## RESEARCH NETWORK (PTA, KP)

Belgium Campus is a member of the South African National Research Network (SANReN), a high-speed network dedicated to science, research, education and innovation traffic. It also provides a connection to other universities and research institutions across the country.

## MASTER CLASSES (PTA)

Become the master of your own future with our additional specialised classes. We offer master classes on various topics such as GIT and Power BI which will further enrich our students' futures and allow them to perform optimally in their respective IT fields. The IT industry is ever changing and these classes teach the latest technology within the field.

## IBM CERTIFIED COURSES (PTA)

Belgium Campus staff collaborate with experts and educate students at international standards providing an environment for continuous technical improvement aligned with the IT industry's needs. Students use this training to enhance their technical knowledge and can opt to complete IBM certification following training.

## SPECIAL NEEDS (PTA, KP)

Belgium Campus iTversity is one of the few universities in South Africa that caters for students with special needs. We believe in equal access to education and we are dedicated to ensuring that the education we provide is accessible to all students, including students with learning and physical disabilities. One of the ways we do this is by providing a Diploma in Information Technology specifically designed for students with hearing loss who use South African Sign Language (SASL) as their preferred method of communication.

**Our Diploma in Information Technology allows our Deaf students to graduate with an NQF level 6 qualification. They write identical assessments, tests and exams to their hearing peers and are able to gain the invaluable experience of working with hearing students to prepare for the working environment.**

We provide a customised curriculum as well as South African Sign Language interpreters throughout the 3 years of classroom contact and 1 year of industry training. Classes are limited to a maximum of 10 students to ensure each student receives dedicated attention. We are continually refining and adjusting our approach for the benefit of our Deaf students and our students with disabilities as a whole.

## LEUVEN RESIDENCE





## COUNSELLING (PTA, KP, PE)

A qualified psychologist, professional counsellors and student counsellors are all at your service, to provide free guidance and support, as and when you need it.



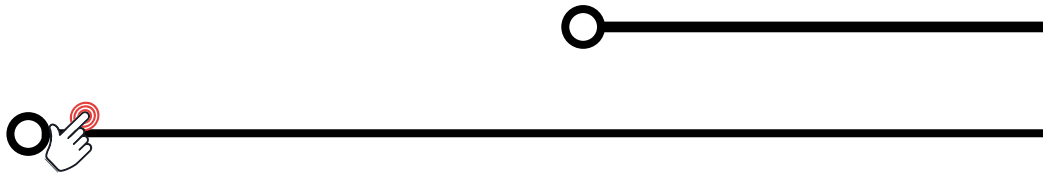
Belgium Campus puts its students first by preparing them for a world-class career in IT. Everything from the qualifications we offer, to our bustling campus is geared to provide students with an education and varsity experience like no other. We strive to give our students as many learning opportunities as possible so that they are well ahead of the rest of the IT workforce that are about to enter the industry.

## ACTIVITIES

Inspired by the belief that a healthy body houses a healthy mind, our Tshwane campus offers a range of outdoor activities.

Student events and activities are regularly arranged by the Student Representative Council (SRC) throughout the year.



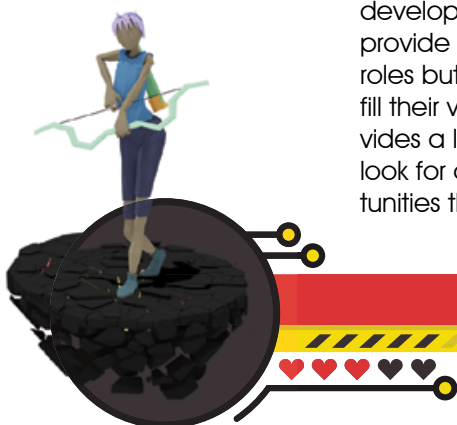




## THERE IS ALWAYS A NEED FOR A CAPABLE IT PRACTITIONER IN ANY SECTOR AT ANY TIME.

Every company needs capable, passionate and responsible employees. These are the core traits that make up a professional person. Belgium Campus's theoretical and practical training prepares students for the strenuous demands of the industry. We make all the necessary efforts to ensure that our students are employed post-graduation.

We regularly invite some of our corporate partners to the Belgium Campus recruitment events. These events give organisations a chance to attract, meet and recruit qualified candidates for internships and future employment. Our students can also find out more about opportunities that are available for them in the workplace both locally and globally.



IT is a modern-day business catalyst and Belgium Campus helps develop an indispensable workforce for any corporation. We provide the industry with individuals that are not only aware of their roles but are equipped with the necessary skills and knowledge to fill their very important positions. The dynamism of the IT industry provides a limitless platform. We continuously challenge our students to look for opportunities that are outside of their comfort zones, opportunities that test their creativity and excite them.

“

**THERE'S A LOT OF GOOD TALENT AT BELGIUM CAMPUS. IT'S ABOUT GETTING OPPORTUNITIES AND HAVING A PLATFORM WHERE PEOPLE CAN ACTUALLY BE RECOGNISED AND MENTORED. THE BELGIUM CAMPUS GRADUATE PROGRAMME IS A GOOD PLACE TO START. — MARIUS VORSTER, TEAM LEAD AND CONSULTANT, BRITEHOUSE.**

**OUR EXPOSURE AS AN ORGANISATION HAS BEEN LIMITED IN RESPECT OF PEOPLE WITH DISABILITIES, AND I THINK, THROUGH OUR INVOLVEMENT WITH BELGIUM CAMPUS, THIS WILL BE A LEAP FORWARD FOR US, BRINGING THESE GUYS INTO THE ORGANISATION, AND INTO THE FAMILY.” — JACQUES STEYN, DIRECTOR OF BUSINESS DEVELOPMENT, INFOMET.**

”



**BELGIUM CAMPUS**  
iTiversity



It's the way we're *wired*



## PHYSICAL ADDRESSES:

## POSTAL ADDRESS:

PO Box 60327  
Karen Park  
0118

## WEBSITE:



## EMAIL:

[info@belgiumcampus.ac.za](mailto:info@belgiumcampus.ac.za)



@BelgiumCampusSA



@BelgiumCampus



/Belgium Campus



@belgiumcampus

Belgium Campus iTiversity 1 NPC (Non Profit Company – Incorporated for Public Benefit) 2001/017971/08. BBBEE Level 4 Contributor, certificate No.: 01/B-BBEE/2017/00225/GEN; PBO Reference No: 930009313; is registered with the Department of Higher Education & Training as a private higher education institution under the Higher Education Act, 1997. Registration Certificate No 2003/HE08/001 to offer programmes listed thereon.